

Flanges, types of sealing surfaces

- Extract from DIN EN 1092

Page 2

Flange dimension

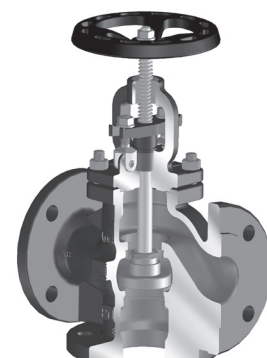
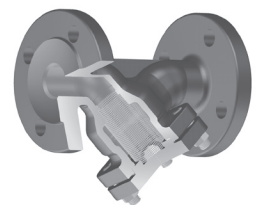
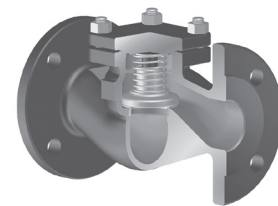
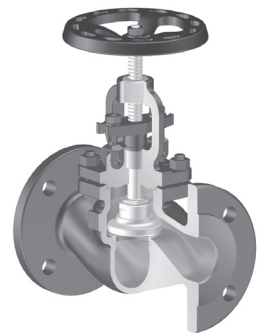
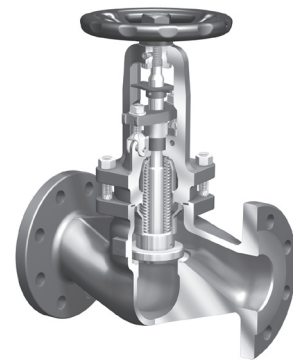
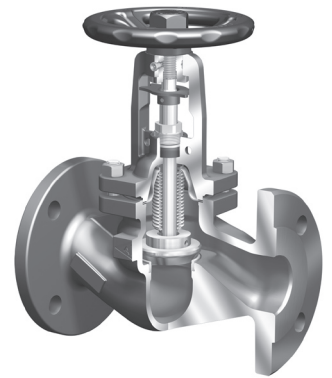
- ANSI 150-300
- BS / E-F-J-K
- JIS

Page 3

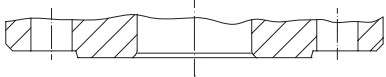
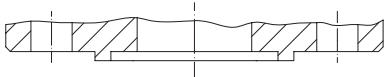
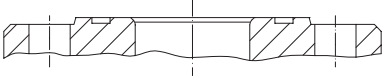
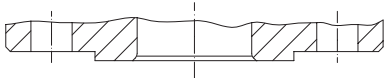
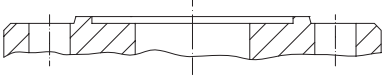
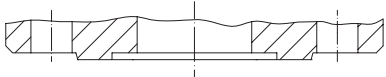
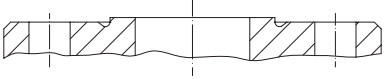
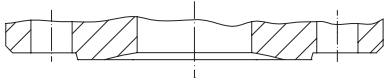
Handwheel - dimension

- Handwheel FABAR[®]-Plus / -Supra
- Handwheel STOBUR[®]

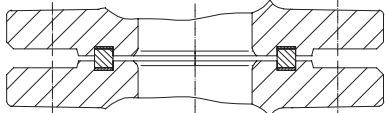
Page 6

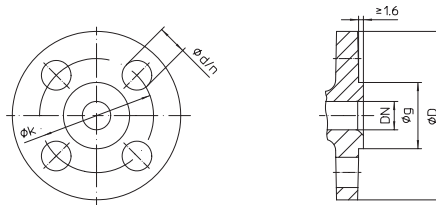


This standard contains the descriptions and symbols of flange types with different joints.

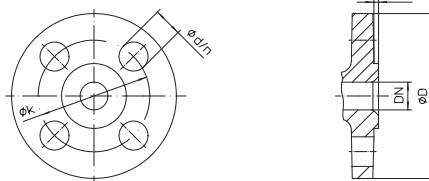
Actual version:		Former indication (invalid):		
Flange types acc. to DIN EN 1092		Flange types acc. to DIN		
Form B+B1	Sealing edge Rz 12,5 - 50		Form C	Sealing edge Rz 160 according to DIN 2526
Form B+B1	Sealing edge Rz 12,5 - 50		Form D	Sealing edge Rz 40 according to DIN 2526
Form B2	Sealing edge Rz 3,2 - 12,5		Form E	Sealing edge Rz 16 according to DIN 2526
Form C	Key-type flange Sealing edge Rz 3,2 - 12,5		Form F	Key-type flange according to DIN 2512
Form D	Groove flange Sealing edge Rz 3,2 - 12,5		Form N	Grooved flange according to DIN 2512
Form E	Shouldered flange Sealing edge Rz 12,5 - 50		Form V 13	Shouldered flange according to DIN 2513
Form F	Recessed flange Sealing edge Rz 12,5 - 50		Form R 13	Recessed flange according to DIN 2513
Form G	O-ring recessed flange Sealing edge Rz 3,2 - 12,5		Form R 14	Recessed flange according to DIN 2514
Form H	O-ring shouldered flange Sealing edge Rz 3,2 - 12,5		Form V 14	Shouldered flange according to DIN 2514
---			Form L	Recess for countersunk sealing according to DIN 2696

Reproduction with permission of DIN Deutsches Institut für Normung e.V. The latest edition of this standard, which can be obtained from Beuth Verlag GmbH, Burggrafenstraße 6, D-10787 Berlin, is the authoritative version.

Installation example:	
2 x Groove flange Form D acc. to DIN EN 1092 with insert ring and 2 gaskets	



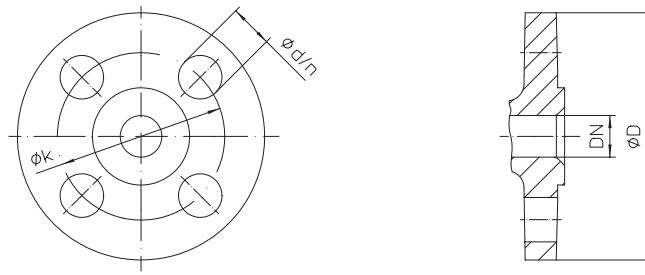
DN	NPS	ANSI 150					ANSI 300				
		ϕD (mm)	ϕg (mm)	ϕk (mm)	ϕd (mm)	n Number	ϕD (mm)	ϕg (mm)	ϕk (mm)	ϕd (mm)	n Number
15	1/2	89	35	60	16	4	95	35	67	16	4
20	3/4	99	43	70	16	4	117	43	82,5	19	4
25	1	108	51	79	16	4	124	51	89	19	4
32	1 1/4	118	64	89	16	4	133	64	98	19	4
40	1 1/2	127	73	98	16	4	156	73	114	22	4
50	2	153	92	121	19	4	165	92	127	19	8
65	2 1/2	178	105	140	19	4	191	105	149	22	8
80	3	191	127	152	19	4	210	127	168	22	8
100	4	229	157	191	19	8	254	157	200	22	8
125	5	254	186	216	22	8	279	186	235	22	8
150	6	279	216	241	22	8	318	216	270	22	12
200	8	343	270	298	22	8	381	270	330	25	12
250	10	406	324	362	25	12	445	324	387	29	16
300	12	483	381	432	25	12	521	381	451	33	16
350	14	533	413	476	29	12	584	413	514	33	20
400	16	597	470	540	28	16	648	470	572	35	20
500	20	699	584	635	32	20	775	584	686	35	24



DN	NPS	BS / E				BS / F			
		ϕD (mm)	ϕK (mm)	ϕd (mm)	n Number	ϕD (mm)	ϕK (mm)	ϕd (mm)	n Number
15	1/2	95	67	14	4	95	67	14	4
20	3/4	102	73	14	4	102	73	14	4
25	1	114	83	14	4	121	87	18	4
32	1 1/4	121	87	14	4	133	98	18	4
40	1 1/2	133	98	14	4	140	105	18	4
50	2	152	114	18	4	165	127	18	4
65	2 1/2	165	127	18	4	184	146	18	8
80	3	184	146	18	4	203	165	18	8
100	4	216	178	18	8	229	191	18	8
125	5	254	210	18	8	279	235	22	8
150	6	279	235	22	8	305	260	22	12
200	8	337	292	22	8	368	324	22	12

DN	NPS	BS / J				BS / K			
		ϕD (mm)	ϕK (mm)	ϕd (mm)	n Number	ϕD (mm)	ϕK (mm)	ϕd (mm)	n Number
15	1/2	114	83	18	4	114	83	18	4
20	3/4	114	83	18	4	114	83	18	4
25	1	121	87	18	4	127	95	18	4
32	1 1/4	133	98	18	4	133	98	18	4
40	1 1/2	140	105	18	4	152	114	22	8
50	2	165	127	22	4	165	127	18	8
65	2 1/2	184	146	22	8	184	146	22	8
80	3	203	165	22	8	203	165	22	8
100	4	229	191	22	8	241	197	25	8
125	5	279	235	25	8	279	235	25	12
150	6	305	260	25	12	305	260	25	12
200	8	368	324	25	12	368	318	29	12

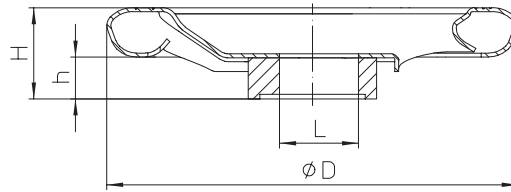
Additional cost



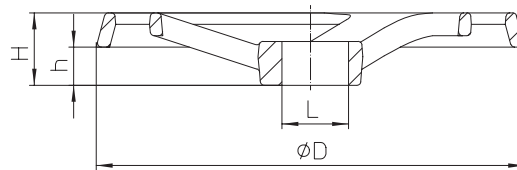
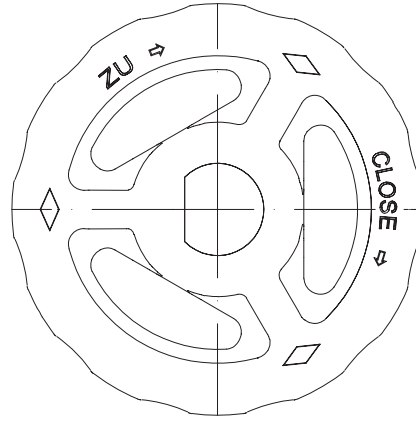
DN	JIS 5 KRF			
	Ø D	Ø k	Ø d	n
	(mm)	(mm)	(mm)	Number
15	80	60	12	4
20	85	65	12	4
25	95	75	12	4
32	115	90	15	4
40	120	95	15	4
50	130	105	15	4
65	155	130	15	4
80	180	145	19	4
100	200	165	19	8
125	235	200	19	8
150	265	230	19	8
200	320	280	23	8
250	385	345	23	12
300	430	390	23	12
350	480	435	25	12
400	540	495	25	16
500	655	605	25	20

DN	JIS 10 KRF			
	Ø D	Ø k	Ø d	n
	(mm)	(mm)	(mm)	Number
95	95	70	15	4
100	100	75	15	4
125	125	90	19	4
135	135	100	19	4
140	140	105	19	4
155	155	120	19	4
175	175	140	19	4
185	185	150	19	8
210	210	175	19	8
250	250	210	23	8
280	280	240	23	8
330	330	290	23	12
400	400	355	25	12
445	445	400	25	16
490	490	445	25	16
560	560	510	27	16
675	675	620	27	20

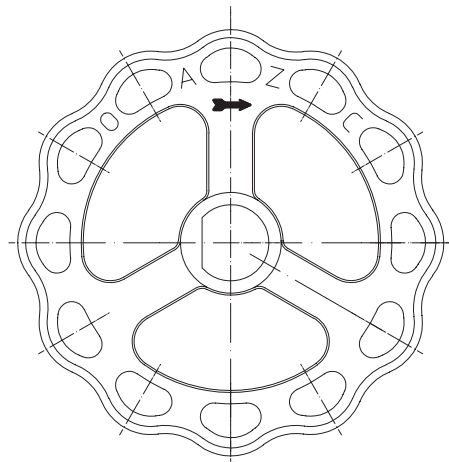
DN	JIS 16 KRF / 20 KRF			
	Ø D	Ø k	Ø d	n
	(mm)	(mm)	(mm)	Number
15	95	70	15	4
20	100	75	15	4
25	125	90	19	4
32	135	100	19	4
40	140	105	19	4
50	155	120	19	8
65	175	140	19	8
80	200	160	23	8
100	225	185	23	8
125	270	225	25	8
150	305	260	25	12
200	350	305	25	12
250	430	380	27	12
300	480	430	27	16
350	540	480	33	16
400	605	540	33	16
500	730	660	33	20



Handwheel Ø 125 - 300
from Ø 300 onwards = 5 spokes



Handwheel Ø 400 - 640
from Ø 300 onwards = 5 spokes



FABA-Plus PN 16	DN	15 - 32	40 - 50	65 - 80	--	100	125	150	200 - 300	350 - 400	
FABA-Plus PN 25	DN	15 - 32	40 - 50	65 - 80	--	--	100 - 125	150	200 - 300	350 - 400	
FABA-Plus PN 40	DN	15 - 32	40 - 50	65	80	--	100 - 125	150	200 - 250	--	
FABA-Supra (one-piece stem)	DN	15 - 32	40 - 50	65	--	80	100 - 125	150	200 - 300	350 - 400	
FABA - LA	DN	--	--	15 - 32	40 - 80	--	100 - 125	150	200 - 300	350 - 400	
Material		St					Cast iron				
Ø D	(mm)	125	150	175	225	225	300	400	520	640	
H	(mm)	26	30	35	35	47	45	45	30	33	
h	(mm)	14	14	14	19	23	23	27	27	33	
L	(mm)	24	24	24	24	35	35	35	44	54	
Weight	(kg)	0,2	0,3	0,5	0,6	0,6	1,5	6,4	11	12	

